

OUR STORY STARTS IN THE FOREST

For 120 years, we've been growing, harvesting, and re-growing forests on a continuous cycle. Our trees provide clean air and water, wildlife habitat, recreation, renewable energy, great jobs, and a sustainable supply of wood for hundreds of products people use every day.

WE HARVEST LESS THAN YOU THINK

The vast majority of our land is covered in trees. We calculate how long it takes different tree species to mature in different geographies, and on average we harvest only two percent of our forests each year to make sure we never cut more than we grow. Like you, we want our forests to last forever.

WE PLANT MORE THAN WE HARVEST

We grow high-quality seedlings in our own nurseries and plant about 150 million of them every year. To make sure healthy forests return after harvest, we carefully prepare the soil, plant more trees than we cut, and continue to care for the growing trees until they become a forest once again.

WE MAKE THE MOST OF EACH LOG

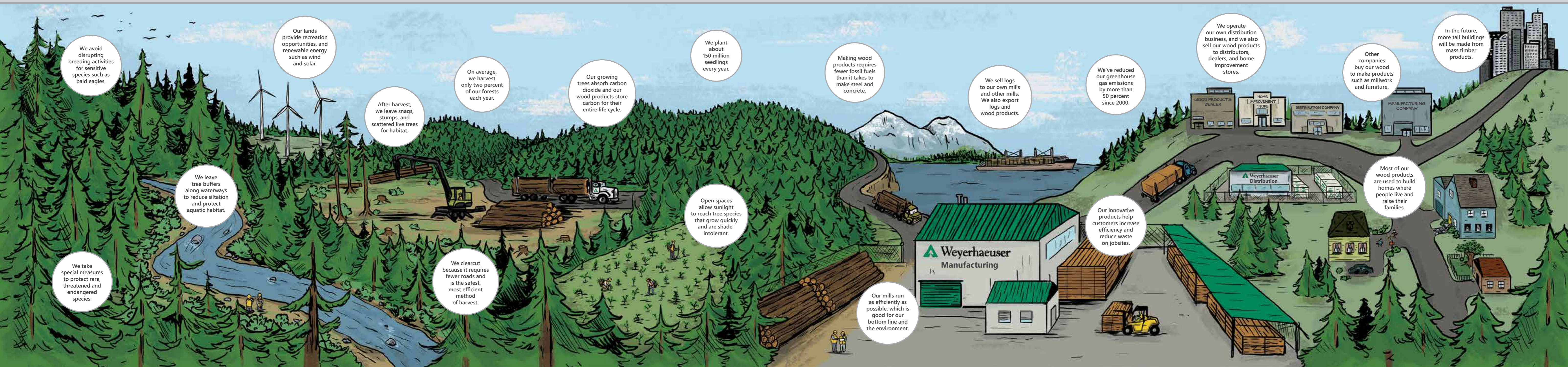
The strongest part of the tree is used to make lumber. Other wood fiber is converted into strands and veneer, which are used to make engineered wood products. Wood chips are sold to make pulp, paper, and pellets. Chips, shavings and sawdust are used to make medium density fiberboard. And bark and refuse are used to generate energy.

OUR PRODUCTS MAKE LIFE BETTER

Wood products are certainly beautiful, but they're also fundamental. Most of our products are used to build homes where people live and raise their families. We're proud of that. But wood fiber is used in hundreds of other useful products, too, from paper towels and diapers to toothpaste and toothpicks.

THIS CYCLE CONTINUES FOREVER

Wood is the ultimate renewable resource. When we use wood products, it creates economic incentive for companies like ours to continue growing trees, rather than using our land for other purposes. We know our forests can thrive forever when managed well, and we've been proving it for more than a century.



We avoid disrupting breeding activities for sensitive species such as bald eagles.

Our lands provide recreation opportunities, and renewable energy such as wind and solar.

We leave tree buffers along waterways to reduce siltation and protect aquatic habitat.

We take special measures to protect rare, threatened and endangered species.

After harvest, we leave snags, stumps, and scattered live trees for habitat.

On average, we harvest only two percent of our forests each year.

We clearcut because it requires fewer roads and is the safest, most efficient method of harvest.

Our growing trees absorb carbon dioxide and our wood products store carbon for their entire life cycle.

Open spaces allow sunlight to reach tree species that grow quickly and are shade-intolerant.

We plant about 150 million seedlings every year.

Making wood products requires fewer fossil fuels than it takes to make steel and concrete.

Our mills run as efficiently as possible, which is good for our bottom line and the environment.

We sell logs to our own mills and other mills. We also export logs and wood products.

We've reduced our greenhouse gas emissions by more than 50 percent since 2000.

Our innovative products help customers increase efficiency and reduce waste on jobsites.

We operate our own distribution business, and we also sell our wood products to distributors, dealers, and home improvement stores.

Other companies buy our wood to make products such as millwork and furniture.

Most of our wood products are used to build homes where people live and raise their families.

In the future, more tall buildings will be made from mass timber products.

OUR ECOSYSTEM STORY

Our forests provide much more than timber. They are thriving, healthy ecosystems.

OUR CARBON STORY

Forests and wood products play an essential role in mitigating climate change.

OUR GREEN BUILDING STORY

Wood is the ultimate green-building material: strong, versatile, reusable, and sustainable.

OUR SUSTAINABLE APPROACH

Sustainability means making smart choices today that ensure success over the long term.

We own more than 12 million acres of timberlands in the U.S. and manage additional timberlands under long-term licenses in Canada. We own 35 manufacturing facilities that produce lumber, oriented strand board, medium density fiberboard, plywood, I-joists, laminated veneer lumber and other engineered wood products. We also operate 18 distribution center across the U.S.

We employ about 9,300 talented people who serve customers worldwide.

Follow us



wy.com/sustainability

All the living things (plants, animals, insects, fungi) in a forest interact with each other and with the soil, water and air to form a forest ecosystem.

When an ecosystem is healthy, it's sustainable.

To prove we take care of these ecosystems in the right way, we certify our forests and supply chain to meet internationally recognized sustainable forest management standards through the Sustainable Forestry Initiative®.

As trees grow, they absorb carbon dioxide from the atmosphere, turn it into carbon and store it in their trunks, limbs, roots and leaves. During that process, trees release oxygen into the atmosphere for us to breathe.

When we harvest a tree and make it into a wood product, the carbon remains stored in the wood for the life of the product.

When we replant our forests, the continuous cycle of growing trees and storing carbon starts all over again.

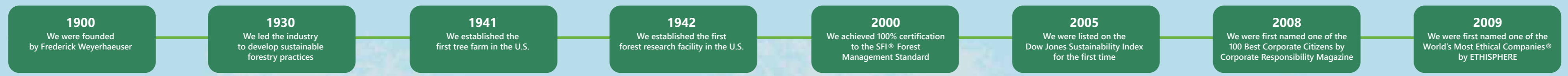
Wood production consumes less energy, emits fewer greenhouse gases, releases fewer pollutants, stores more carbon and generates much less water pollution compared with other building materials like steel and concrete.

Most homes in North America are built with wood, and now more tall buildings are being constructed using mass timber products. Wood is safe, durable, and beautiful.

And because we manage our forests sustainably, we can keep producing wood forever.

We focus on environmental stewardship because it's the right thing to do, and because our long-term success depends on a healthy, sustainable supply of trees. We also depend on strong relationships with our communities because without their support, we can't operate. And perhaps most of all, we depend on a constant flow of diverse, talented people who are excited to join our team and build a long-term career at our company.

Our sustainability story began nearly 120 years ago, and we intend to be here for another century and more.



A SINGLE TREE
WON'T LAST FOREVER
BUT A FOREST CAN

WHAT WE DO & HOW WE DO IT